

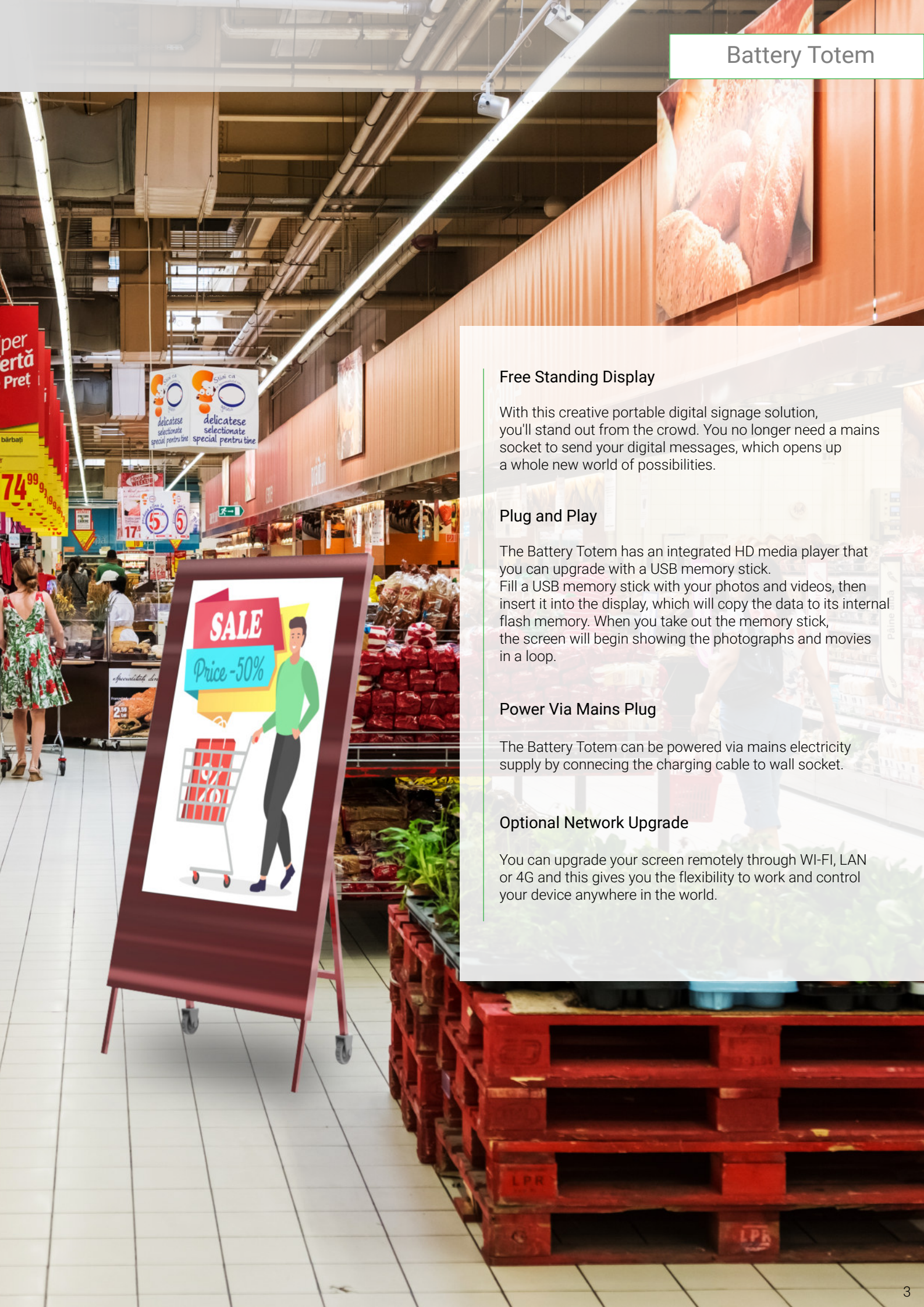
# BATTERY TOTEM

Elegance Series

## Battery Totem

Battery series products are battery-powered displays that can work for long hours without the need for any electrical source. With these portable screens away from cable clutter, you can present your products and services at any point.





## Free Standing Display

With this creative portable digital signage solution, you'll stand out from the crowd. You no longer need a mains socket to send your digital messages, which opens up a whole new world of possibilities.

## Plug and Play

The Battery Totem has an integrated HD media player that you can upgrade with a USB memory stick. Fill a USB memory stick with your photos and videos, then insert it into the display, which will copy the data to its internal flash memory. When you take out the memory stick, the screen will begin showing the photographs and movies in a loop.

## Power Via Mains Plug

The Battery Totem can be powered via mains electricity supply by connecting the charging cable to wall socket.

## Optional Network Upgrade

You can upgrade your screen remotely through WI-FI, LAN or 4G and this gives you the flexibility to work and control your device anywhere in the world.

### Commercial Grade Panel and Components

With a commercial-grade panel having a 70,000-hour lifespan and high-quality components, the high-brightness Battery Totem may be used continuously 24 hours a day and seven days a week.

### Battery Powered Display

The integrated lithium-polymer battery transforms the way digital signage is used. This slimline battery solution is commercial grade and provides over 12 hours of run time.

### Integrated Castors

The Battery Totem is fully portable with fixed castors that may be simply moved by one person. Once the Totem is in place, these wheels can be secured to prevent it from moving.

### Multiple Inputs

If you need to utilize the screen as a monitor, you can use the HDMI input or the VGA and 3.5mm audio jack inputs to link it to an external source, such as a PC or media player.



Interact with Digital Signage Displays with battery technology that you can easily position in any environment!



Battery Powered Display



Plug and Play



Ambient Light Sensor



Full High Definition 1080p



24/7 Usage



Portable Solution



Stylish Design



Network Upgrade Available

## PANEL

## TI430EA-BT

## TI490EA-BT

Panel Size	43"	49"
Panel Type	60Hz ELED	60Hz ELED
Resolution	1920*1080	1920*1080
Brightness (Typ.)	700 cd/m <sup>2</sup>	700 cd/m <sup>2</sup>
Contrast	5000:1 (Typ.) (TM)	5000:1 (Typ.) (TM)
Viewing Angle	178°	178°
Applications	Horizontal / Vertical	Horizontal / Vertical

PANEL  
CONNECTIVITY

Video	HDMI, VGA	HDMI, VGA
Audio	Audio Socket (3.5 mm)	Audio Socket (3.5 mm)

## BATTERY

Battery Technology	Integrated lithium polymer	Integrated lithium polymer
Charging Time	7 hours	7 hours
Battery Life	12 hours	12 hours
Power Supply	18 - 20V	29.4 - 21V
Power Consumption	120W	126W

## ENVIRONMENTAL

Operating Temperature	0°C to 50°C	0°C to 50°C
Storage Temperature	-30°C to 60°C	-30°C to 60°C
Operating Humidity	10% to 80%	10% to 80%
Storage Humidity	5% to 95%	5% to 95%

unisign / DISPLAY  
TECHNOLOGY



unisigns



unisigns



unisigns



unisign

[www.unisign.com.tr](http://www.unisign.com.tr)  
[hello@unisign.com.tr](mailto:hello@unisign.com.tr)



**BATTERY  
TOTEM**